



ARGENTINA

ARGENTINA



REGIONAL HIGHLIGHTS

NORTHWEST: BETWEEN THE HIGHLANDS AND VALLEYS

Pre-Columbus vestiges, ruins of fortresses and Indian villages and constructions of colonial times. Calchaquies Valleys (land of the white and fruited "torrontés wine"), the "Altiplano de la Puna" (High Plains of the northwest region) and the "Quebrada of Humahuaca" (the access to the Puna, declared as Patrimony of Humanity).

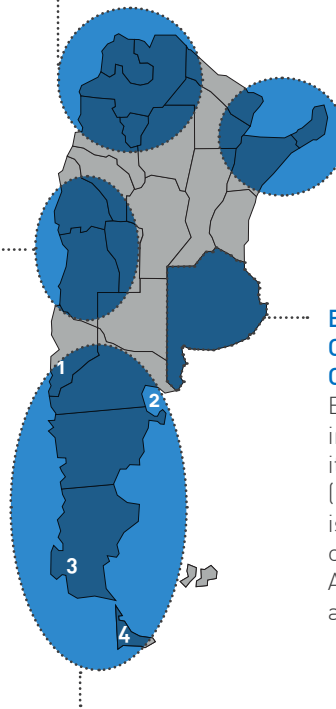
NORTHEAST: IGUAZU WATERFALLS AND NATURAL WILDLIFE

The Iguazu Falls are one of the most beautiful areas of the country, with wonderful and exuberant sides, declared by UNESCO as "Natural Heritage of Humanity". Iberá Marshes: Wetlands that cover over 13,000 km² of marsh with over 60 lakes. Visitors can get face to face with a unique wildlife.

CUYO:

LAND OF HILLS & WINE

Snowy volcanoes and vast roads that spread from the Andes and the lower parts of the highlands to the plain of the steppes. "Moon Valley" and "Canyon of the Talampaya River", paleontology sites full of amazing shapes and colors. Mendoza province is the most important wine center of the country and one of the most outstanding of the world. Vineyards can be visited to be delighted with its wines and regional food. Find the highest peak of America: the Aconcagua hill (4350 miles high).



BUENOS AIRES: COSMOPOLITAN CAPITAL CITY

Biggest urban center in the country. With its metropolitan area (Great Buenos Aires) it is the second biggest conglomerate in South America. Important cultural activity and busy night life.

PATAGONIA: ICE FIELDS, LAKES AND WILDLIFE

- 1 - Bariloche:** Its landscape is made of imposing mountain masses and beautiful lakes, surrounded by dense forests with autochthon plant species. The zone also has attractive and important ski centers, such as Bariloche, located at the south of the "Nahuel Huapi" lake, to the east of the Rio Negro province.
- 2 - Puerto Madryn:** the access door to the magnificent Peninsula Valdés, the Natural Reserve where southern right whales can be seen every year. Sea lions, sea elephants and birds are part of this region declared as World Heritage by UNESCO. Beyond the nearby areas surrounding the city find Punta Tombo, home of the largest colony of Magellan penguins in the world.
- 3 - El Calafate:** Find the Perito Moreno Glacier and hike over this extremely huge mass of eternal ice, as well as get on board of sea crafts to cover the Argentine Lake. Well connected through regular buses from and to Río Gallegos, El Chaltén and Puerto Natales (base for the visit to the National Park "Torres del Paine")
- 4 - Ushuaia:** capital city of the province of Tierra del Fuego, Antártida and the South Atlantic islands. This area at the edge of the Beagle Channel is the most southern city of the planet. Its port of deep waters is the closest to Antarctica.

GENERAL INFORMATION:

LOCATION

Argentina is the second largest country of South America (around 2,78 mio. skm). It borders in the North on Bolivia and Paraguay, in the East on Brazil, Uruguay and the Atlantic Ocean, in the West on Chile and in the South on the Antarctic Ocean.

POPULATION

Approx. 40 million; as many Spanish, Italians, Germans and French immigrated, the Argentinean nation is the most European influenced nation of the subcontinent.

CAPITAL

Buenos Aires city (Ciudad Autónoma de Buenos Aires).

POLITICS & ECONOMY

Argentina is a democratic republic. Around 33 % of the working population works in the processing industries, 17 % in the agriculture and forestry. The tourist sector is developing fast and getting more and more important for the country's economy.

CURRENCY

Argentinean Peso.

LANGUAGE

Spanish, also called Castellano.

CLIMATE

In the mainland December, January and February are the hottest months (Buenos Aires between 17 and 36°C) and July and August the coldest ones. The North including Salta and Iguazu is subtropical, the central region, called Pampa, continental temperate and the southern Patagonia has a cold winter climate.

BEST TRAVEL TIME

Due to the extension in latitude, Argentina offers different climates and allows to be visited in any time of the year, especially from October to March. And in the subtropical Northern region from April till September.

562
NOGARÓ
BUENOS AIRES

725
CONTINENTAL
HOTEL



GETAWAY TOURS



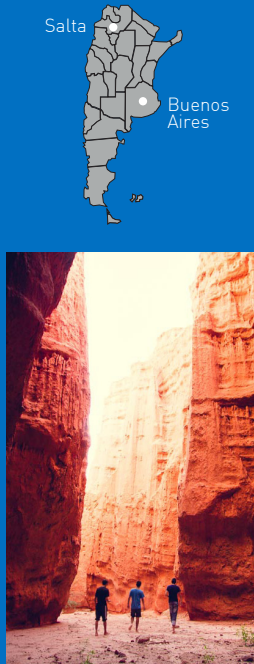
BUENOS AIRES & IGUAZU

DAY 1	Buenos Aires	Arrival Buenos Aires. Half Day City tour to see the main attractions of this lively city.
DAY 2	Buenos Aires / Iguazú Falls	Transfer to the airport. Welcome transfer and Half Day Brazil Falls side to see them from a panoramic view.
DAY 3	Iguazú	Full Day Argentina Falls side , to see them from inside view along the upper and lower circuits.
DAY 4	Iguazú / Bs. As.	Transfer to the airport. Welcome and transfer to the hotel.
DAY 5	Buenos Aires	Transfer to the airport. End of our services.



WINE TOUR

DAY 1	Buenos Aires / Mendoza	Transfer to the local airport to fly to Mendoza. In the evening, transfer to Maipu area to enjoy a delicious Dinner at "El Club Tapiz" .
DAY 2	Mendoza	Today, we will participate in the Full Day Wine Experience tour that includes the visit to 2 or 3 wine cellars, where wine experts will explain the wine production process. We will taste the most emblematic wines and take a regional barbecue.
DAY 3	Mendoza	Day at leisure. Some suggested tours: Visit to UCO wine region, high mountain tour, etc.
DAY 4	Mza. / Bs. As.	Transfer to the airport of Mendoza. Welcome and transfer to the hotel. End of our services.



NORTHWEST SALINAS & PUNA

DAY 1	Bs. As. / Salta	Arrival Salta. Welcome and transfer to the hotel in Salta.
DAY 2	Salta / San Antonio de los Cobres / Purmamarca	The trip begins in Salta towards the Tastil Ruins arriving to San Antonio de los Cobres , after a stop for lunch and a short visit the town. We continue our trip along Route 40 crossing one of the most desert areas of our country. Then, we arrive to Salinas Grandes (The Great Salt Flat), where the white shiny salt invites you to relax and take good shots. Continue down the Lipán Cliff arriving to Purmamarca , with its Seven Colors Hill and the enchant of the small houses. Overnight in Purmamarca.
DAY 3	Purmamarca / Quebrada Humahuaca / Salta	Start towards the town of Tilcara where we visit the Pucará (ancient ruins), the Archaeological Museum, and Huacalera, cross the Capricorn Tropic. Visit Uquía and its church. Continue to Humahuaca. We will observe La Paleta del Pintor (Painter's framing) the town of Maimara. We continue to San Salvador de Jujuy. Finish in Salta's hotel.
DAY 4	Salta	The journey starts from Salta city to the south, along route 68 through the Lerma Valley and its historical towns. We reach Quebrada de las Conchas (the Shell's Gorge), where wind and water erosion carved curious shapes on the rocks. When we arrive to Cafayate , we will visit one of its wineries, famous for their production of Torrontes wine. Overnight in Cafayate.
DAY 5	Cafayate / Salta	Transfer from Cafayate to Salta airport. End of our services.



GOLF & LEISURE IN BUENOS AIRES

DAY 1	Arrival Buenos Aires. Half Day City tour to see the main attractions of this lovely city.	
DAY 2	First Golf Round at "Lagartos Golf & Country Club" , 6800 yards 72-Par course, where the J.C. Tailhade International Championship performs.	
DAY 3	Second Golf Round at "Argentino Golf Club" , the first golf club in the country established by Argentine people. Counts with a beautiful course of 18 holes par 72.	
DAY 4	Third Golf Round in "Olivos Golf Club" , one of the best courses in the country and the region, ranking it within the top 100 courses around the world.	
DAY 5	Day at leisure. In the afternoon, enjoy a Dinner and Tango Show with Wine Tasting or Tango Lesson at La Ventana .	
DAY 6	Transfer to the airport for your flight. End of our services.	

AMÉRIAN
HOTELES



ARGENTINA Top to Bottom

14 DAYS /13 NIGHTS

Day 1 - Buenos Aires.

After the welcome at the International Airport of Ezeiza, the trip to the selected hotel will take place. The rest of the day is free to rest at ease.

Day 2 - Buenos Aires/ Iguazú Falls.

We will travel to the local airport, to head Puerto Iguazú. Arrival and Half-day tour to admire the **waterfalls from the Brazilian side**, from where the waterfalls in all their extent can be viewed, observing them from more distant and wider angles.

Day 3 - Iguazú.

We will make the tour to the waterfalls, covering them from the **Argentine side**. We will make a long walk along the lowest part & the upper part of the footbridges.

Day 4- Iguazú / Buenos Aires.

Transfer to the airport to fly to Bs. As. Arrival and transfer to the hotel.

Day 5 - Buenos Aires.

During this day, we will make a **city tour** over the Buenos Aires city, showing its different districts, communities and architectural styles.

Day 6 - Buenos Aires /Trelew/ Punta Tombo / Puerto Madryn.

Transfer to the local airport to fly to Trelew. Once there, we will travel 75 miles to the south of the city of Trelew, where we can find the biggest continental concentration of Magallanes penguins: **Pingüinera de Punta Tombo** (Punta Tombo Penguin colony). Sighting season: September- April. We will continue to Puerto Madryn.

Day 7- Península de Valdés.

We make a full day tour to **Península Valdés**. We leave early heading to Puerto Pirámides, where we will get on board to watch the whales during one hour and a half

(Whales sighting season: From June to mid-December). Then we continue towards the inner part of the peninsula.

Day 8- Puerto Madryn / Trelew / Calafate.

We will go to the airport to fly to Calafate. Arrival and transfer to the hotel.

Day 9- Calafate.

This day, we will make the Full day tour to the **National Park Los Glaciares**, visiting the **Perito Moreno Glacier**.

This natural monument of extraordinary beauty has been declared by UNESCO as Humanity Patrimony. We will have access to the footbridges of the glacier, with fantastic panoramic viewpoints.

Day 10- Calafate.

Day at leisure. We recommend sailing along Argentine Lake to see the glacier field.

Day 11- Calafate / Ushuaia.

Transfer to the airport to fly to the city of Ushuaia. Arrival and transfer to the hotel.

Day 12 - Ushuaia.

We will make the half-day visit to the **National Park of Tierra del Fuego**, known for the rareness of the animal, vegetable life and as the only park of the country that has an extended maritime coast. In the afternoon **sail along the Beagle Channel**, where the landscape is a combination of sea and mountains, watching from a close distance some seals and seabirds.

Day 13- Ushuaia / Buenos Aires.

Transfer to the airport to fly to Bs. As. Arrival and transfer to hotel.

Day 14 - Buenos Aires/End of Trip.

Transfer to the international airport. End of our services.





BRASIL



GENERAL INFORMATION:

LOCATION

Brazil is the biggest country in South America and the fifth biggest in the world – it covers nearly half of the South American subcontinent with 8,5 sqkm surface. In the North it borders on Venezuela, Guyana, Suriname and French Guyana; in the South on Uruguay; in the West on Argentina, Paraguay, Bolivia, Peru and Columbia and on the Atlantic Ocean in the North as well as in the East.

POPULATION

Approximately 192 million.

CAPITAL

Brasilia.

POLITICS & ECONOMY

Brazil is a federal republic with a president as the head of state. It is a striving fast-developing country and the leading export country of South America; nearly 70 % of exports are produced in the processing industries. Besides coffee, cacao and sugar cane are the main goods of their industry.

CURRENCY

Brazilian Real.

LANGUAGE

Portuguese.

CLIMATE

Summer in Brazil lasts from October to March and winter from June to August; temperatures and rainfalls vary a lot within the country. 90% of Brazil lies within the tropical zone.

North/Amazon: humid jungle area, drier from June to September, high temperatures not below 23°C.

Atlantic coast: in the Northeast mostly warm, in the coast of Rio humid-tropical with showers between December and April, in the South fluctuating (18 to 40°C).

Interior: semi humid climate until March, relatively dry and cold winter; except of the Pantanal: humid and hot climate, up to 45°C.

South: humid, subtropical climate; **Highlands:** temperate, quite cold in winter.

BEST TRAVEL TIME

October till March.

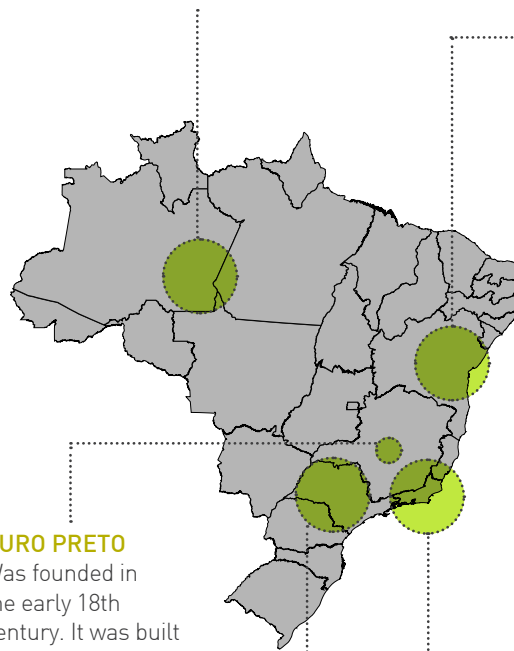
BRASIL



REGIONAL HIGHLIGHTS

MANAUS

Is the capital of Brazil's largest state, Amazonas, and is located in the Northwest of the country. It is an ideal starting point when visiting the rest of the Amazon region. Tour boats leave Manaus to see the Meeting of the Waters, where the black waters of the Negro River meet the white waters of the Solimões River, flowing side by side without mixing for several miles. Visitors can also explore riverbanks and streams, swim and canoe in placid lakes or simply walk in the lush forest.



OURO PRETO

Was founded in the early 18th century. It was built on rocky ground and declared a national monument in 1933. It is the masterpiece of colonial architecture in Brazil with fountains, churches, ruins and towers shining with colored tiles. Centre of the gold fever in the 18th century, gold mines and colonial architecture.

SALVADOR DE BAHIA

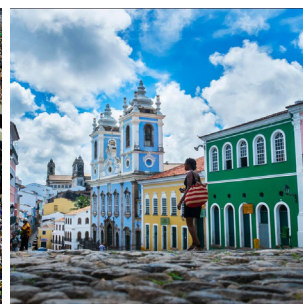
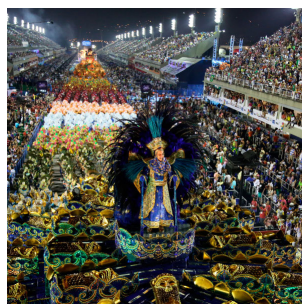
Is the capital of the state of Bahia and used to be the capital of the country until 1763. The city keeps in touch with its African roots and traditions with respect to its cuisine, religion, and artwork. It is divided into two parts: the "Lower City" is at sea level and is where the city's original port and commercial area, including Mercado Modelo, are found. The "Upper City" is reached by alleyways, stone steps or the famous Lacerda elevator. This part of the city is where the majority of museums, churches, modern architecture and the Pelourinho neighborhood are located.

RIO DE JANEIRO

Is the capital of the State of Rio de Janeiro, and was also Brazil's capital from 1763 to 1961. It is nestled between the mountains and the sea. Its magnificent shoreline includes charming bays and beautiful beaches, dotted with islands up and down the coast. Some highlight attractions of the city: Sugar loaf mount (395mts high) situated in the middle of the Guanabara Bay offering one of the most breathtaking views of the city; Corcovado mount with Christ Redeemer statue (completed in 1931 and stands 98 feet/30 meters tall), white sandy beaches like Copacabana and Ipanema beach, the Sambodromo where sambas schools parade, the Maracana stadium and the Metropolitan Cathedral, well known for its pyramid form.

SAO PAULO

is the largest and richest in Brazil and one of the largest in the World. With a booming Economy, Brazil is quickly becoming an important player in World Politics and Economy. And there is no doubt that Sao Paulo is the finance and business capital of Brazil.





TOURS



BEST OF BRASIL

DAY 1	Rio de Janeiro	Arrival Rio de Janeiro. Half Day Sugar Loaf. Mountain in the middle of the Guanabara Bay, which offers one of the most breathtaking views of the city.
DAY 2	Rio de Janeiro	Half Day Corcovado. Train ride to the top of the beautiful mountain, where the statue of Christ, the Redeemer is located. Dinner and Samba show.
DAY 3	Rio de Janeiro	Half Day Tijuca Forest by jeep. A mix of history and nature.
DAY 4	Rio de Janeiro / Manaus	Transfer to Rio de Janeiro airport for flight to Manaus. After arriving in Manaus, transfer to the hotel. The afternoon city tour of Manaus will visit some of its typical neighborhoods.
DAY 5	Manaus / Amazonia	On this day the group will transfer to an eco-lodge for a 2 night program. Depart Manaus pier to see the Meeting of the Waters tour before arriving at the lodge. Dinner at the lodge.
DAY 6	Amazonia	The morning will commence with nature hike at a nearby forest followed by lunch. That afternoon visit the home of local Amazonian residents (cablocos) and have dinner with them. There will be an alligator spotting tour at night. Dinner at the lodge.
DAY 7	Amazonia / Manaus / Salvador	This morning visitors will visit Monkey Jungle. Next, transfer to Manaus airport for a flight to Salvador. Arrival Salvador, welcome and transfer to the hotel.
DAY 8	Salvador	The day will begin with a half-day historical city tour. Get into the historical section of town, Pelourinho, with the most expansive selection of preserved colonial architecture in the Americas. In the evening, Bahia by Night with dinner and a show.
DAY 9	Salvador	This day full day schooner cruise with lunch. Transfer to the pier and board a schooner to cruise to some of the 36 islands in the bay. Stop with time to relax in the sun or swim in the warm waters.
DAY 10	Salvador / Belo Horizonte / Ouro Preto	Transfer to Salvador`s airport to fly to Belo Horizonte. Welcome and transfer to Ouro Preto`s hotel.
DAY 11	Ouro Preto	Half Day Walking City Tour in Ouro Preto with lunch. See some of the remaining sights of this city and the surviving masterpieces of its colonial architecture.
DAY 12	Ouro Preto / Belo Horizonte	Transfer to Belo Horizonte airport. End of our services. + SUGGESTED EXTENSIONS: IGUASSU FALLS - SAO PAULO





PERÚ



GENERAL INFORMATION:

LOCATION

Peru is the third biggest country of Latin America (surface approximately 1,3 km²) – it is situated in the Northwest, south of the equator. The country borders on Ecuador and Colombia in the North, on Brazil and Bolivia in the East, on Chile in the South and on the Pacific Ocean in the West.

POPULATION

Approximately 29,8 million, half of the population still consists of Indígenas, speaking Quechua or Aymara, approx. 37% are mestizos and approx. 13% whites.

CAPITAL

Lima, population approx. 9.3 million.

POLITICS & ECONOMY

The country is governed by a presidential democracy. Peru is an agrarian country and 50 % of the active population works in the agrarian or forestry sector or lives from fishing. Tourism is an important foreign-exchange earner of the Peruvian political economy and is sponsored emphatically by the government.

CURRENCY

Peruvian Nuevo Sol.

LANGUAGE

Spanish also called Castellano. Second language is Quechua.

CLIMATE

On the coast it hardly rains and from January to March the sky is always blue. From May to November you often have the typical "garúa", a dense fog covering the sky. A temperate rather cool mountain climate is dominating in the Andes, where we have the dry season from May to November.

BEST TRAVEL TIME

TO THE COAST from December to April are the hottest months. Between June and September is the coolest and dampest time of year. During the rest of the year light clothing, a sweater and long trousers are suggested.

TO THE HIGHLANDS the best time to visit the highlands is from April to October, when there is no rain and the days are sunny, with daytime temperatures up to 24°C (75°F), but at nights it can fall to -3°C (27°F). The rainy season is from November to March.

TO THE JUNGLE the warm, wet and rainy climate with temperatures above 35°C (95°F) in the low jungle during the months of April to October make this the best time to visit. The high jungle has a temperate subtropical climate with a lot of rain between November and March and sunny days between April and October.



COAST



HIGHLANDS



JUNGLE



REGIONAL HIGHLIGHTS

IN THE COASTAL REGION:

TRUJILLO AREA: temples, pyramids and cities of mud that survive inclement weather: Chan Chan: the largest adobe city of the Americas; Huaca del Sol y la Luna (great archaeological sites where the capital of the Moche culture was located), el Brujo (One of the most important religious and political centers of the Moche culture). Trujillo, and the entire northern region, is also known for delicious plates where seafood is the protagonist.

LIMA: in the north is the city of Caral, the oldest civilization of America, and to the south is the Archaeological Complex of Pachacamac. Lima's history predates the colonial presence in the country. The arrival of modernity didn't transform the historic center, which is recognized as a World Heritage Site.

ICA & PARACAS: boasts characteristic dunes and a vast desert etched with enigmatic figures, the Nazca Lines (can only be recognized clearly from the sky aboard small airplane), transformed into fertile fields by ancient cultures: The Paracas and the Nazca.

IN THE HIGHLANDS REGION:

CUSCO, SACRED VALLEY & MACHU PICCHU: the history of Cusco lives in its streets, squares, valleys and towns. Stunning destinations and examples of fine engineering by Inca stonemasons can be seen in Choquequirao, Sacsayhuamán, Kenko, Tambomachay, Ollantaytambo and Machu Picchu, the Inca jewel built with the wisdom of the ancient Peruvians in an ecological environment. "Valle Sagrado" (Sacred Valley) is called this way to the end of the extensive valley of Urubamba, near Cusco where the agricultural cattlemen and beautiful towns were concentrated since Inca times. "Valle Sagrado" is embraced between the towns of Pisac and Ollantaytambo, with wonderful landscapes where its inhabitants (native of the Quechua ethnic) conserve many customs and ancestral rites. Machu Picchu is the most famous archaeological site in all South America. It is an Incan city surrounded by temples, terraces and water channels, built on a mountaintop. It was built with huge blocks of stone joined to each other without any mortar. Recognized for outstanding cultural and natural values, the mixed UNESCO World Heritage property covers 32,592 hectares of mountain slopes, peaks and valleys surrounding its heart, the spectacular archaeological monument of "La Ciudadela" (the Citadel) at more than 2,400 meters above sea level. Built in the fifteenth century Machu Picchu was abandoned when the Inca Empire was conquered by the Spaniards in the sixteenth century. It was not until 1911 that the archaeological complex was made known to the outside world.

IN THE JUNGLE REGION:

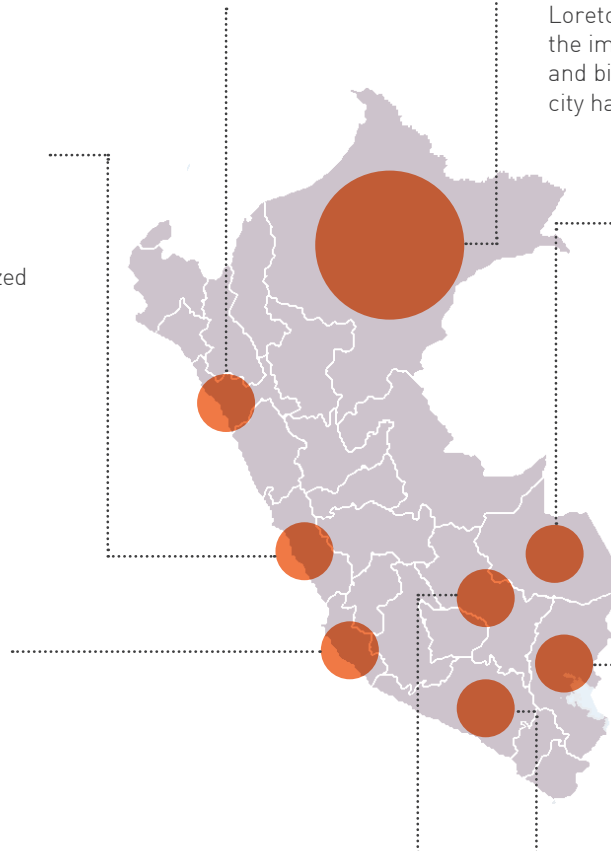
The **AMAZONAS** region is famous for its cloud forests, páramo (alpine tundra ecosystem) and exceptional microclimates. There are also archaeological sites like the enigma of Kuélap. It is home to never-ending forests, winding rivers and abundant wildlife. IQUITOS, capital of Loreto, is isolated from the rest of the world by the impassable rainforest, crossed by the longest and biggest river in the world, the Amazon. The city has a modern and interesting character

deriving from popular art and visions created by the use of ayahuasca.

In the southern Amazon region, PUERTO MALDONADO (Maldonado Port) is the departure point for journeys along the Tambopata & Piedras rivers and the lower part of the Madre de Dios river. This region is also home to indigenous communities that promote ecotourism. The greatest MANU NATIONAL PARK is one of the most extraordinary places for supporting the greatest biodiversity on earth, recognized by UNESCO as World Heritage Site and Biosphere Reserve.

PUNO: located on the Andean plateau, this region is dominated by Lake Titicaca (the highest navigable of the world), sacred place of the Incas and home to natural and artificial islands. As it shares a border with Bolivia it is the perfect place to connect Peru with **BOLIVIA (SEE EXTENSION PROGRAM)**.

AREQUIPA: is Peru's ashlar (white stone) city with snow-capped mountains, volcanoes (e.g. Misti with 5,825 m), deep canyons such as Colca (with a depth of 3,270 m, it is one of the deepest in the world), renowned gastronomy, small coves and beaches.





TOURS



EXPLORING PERU



DAY 1	Lima	Arrival Lima. Welcome and transfer to the hotel.
DAY 2	Lima	Half Day City tour to see the main attractions of the center of Lima and suburbs.
DAY 3	Lima / Arequipa	Transfer to airport of Lima. Welcome to Arequipa airport and Half Day City Tour in Arequipa with the visit to Santa Catalina included.
DAY 4	Arequipa / Colca	Early in the morning we will start our 2 days tour to Colca Valley . This first day, we will visit the Aguada Blanca Natural Reserve , home of vicuñas. Stay in a lodge at Colca.
DAY 5	Colca / Puno	Continue to Cruz del Condor , where you can observe these huge Andean birds and one of the deepest canyons of the world: the Colca`s Canyon . Then, continue to Puno (approx 7hrs).
DAY 6	Puno	Full Day Tour to Uros & Taquile islands navigation , along the Titikaka lake, with lunch.
DAY 7	Puno / Cusco	Transfer by bus to Cusco, seeing on the way traditional villages and local fauna.
DAY 8	Cusco	Half Day City tour in Cusco. Then, visit to Sacsayhuaman , fortress built of huge stone blocks.
DAY 9	Cusco	Train to Machu Picchu . Arrival to Aguas Calientes, from where you will visit "the Lost City of the Incas". At the end of the visit take the train back to the Sacred Valley of the Incas and from there you will be taken back to your hotel in Cusco.
DAY 10	Cusco / Lima	Transfer to the airport of Cusco to fly back to Lima. End of our services.



SUGGESTED EXTENSION: BOLIVIA (from Puno)



DAY 1	Puno / Copacabana / La Paz	Cross Perú - Bolivia border. Arrival Copacabana. Boat to Sun Island & lunch at archaeological site Pilcoçaina . Then, low difficult walk up the hill of 1hr to the Yumani town. Return to Copacabana by boat. Visit Copacabana town and transfer to La Paz.
DAY 2	La Paz / Oruro / Uyuni (Tuesday & Friday)	Transfer by regular bus to Oruro, lunch and city tour in Oruro and then train to Uyuni.
DAY 3	Uyuni / Uyuni Salt Flat / Tahua	Visit the Train Cemetery to learn more about Uyuni`s history. Later, enter to the Uyuni Salt Flat by Colchani . Visit to the Salt hotel museum and the Ojos de Agua (small salt water eruptions). At noon, visit the Incahuasi Island , in the middle of the Salt flat. Visit museum of mummies , at the north part of the flat. Salt flat viewpoint from Tunupa volcano foot. Arrival in the afternoon to Tahua.
DAY 4	Tahua / Siloli Desert	Cross the salt plain, travel along the volcanoes range and restart the trip to Eduardo Avaroa National Reserve to see wild vicuñas and different species of birds. Arrival to Siloli Desert , a magnificent landscape.
DAY 5	Siloli Desert / Laguna Verde / Uyuni	Very early departure to visit the Stone Tree , rock formation in the desert. Visit during sunrise the Geysers of "Sol de Mañana" and enjoy the hot springs. Get into the Dali Desert, surrealist landscape. Later, visit the Laguna Verde (Green Lagoon) . Road back to Uyuni. Arrival to the Laguna Colorada (Red Lagoon) , color gave by effect of the sun and wind on the algae and plankton. Here flamingo nest. Walk around the Rocks Valley . Visit to San Cristobal village . Arrival to Uyuni.
DAY 6	Uyuni / La Paz	Transfer to La Paz (at 50min), political and administrative capital city of Bolivia. Arrival and Half Day Walking tour to see its streets, markets and enjoy a typical Andean lunch.
DAY 7	La Paz / Return	Transfer to the airport of La Paz. End of our services.



CHILE



CHILE

REGIONAL HIGHLIGHTS:



ATACAMA DESERT: Hidden treasures in the driest desert of the world. Minerals create lakes with otherworldly hues, while hot springs bubble amid rugged plains and salt flats.

SANTIAGO: Lively, surprising, cosmopolitan, energetic, sophisticated and worldly, Santiago is a city of syncopated cultural currents, madhouse parties, expansive museums and top-flight restaurants.

CENTRAL VALLEYS: High-class wineries and great hospitality. The charms of Chile's fertile heartland extend far beyond its famous gaucho cowboys.

EASTER ISLAND: The exotic dream destination in the middle of the Pacific Ocean. The haunting moai monoliths fashioned by the island's ancient Rapa Nui culture are true global icons.

LAKE DISTRICT: Spectacular scenery of deep blue mountain lakes, snow-capped volcanoes and lush forests.

TORRES DEL PAINE: Patagonia's treasure – pristine nature in the Torres del Paine National Park.

PUNTA ARENAS: Southernmost city and the starting point for excursions and cruises amongst the fjords & Antarctica.



GENERAL INFORMATION:

LOCATION

Chile borders on Peru in the North, on Bolivia and Argentina in the East and on the Pacific Ocean in the West as well as in the South. The coastline is 4200 km long, whereas the country is only 180 km wide in the average (total surface 750.000 km²). There are islands situated in the Pacific Ocean that are part of Chile: Easter Island, Juan-Fernandez islands, Desaventuradas islands, etc.

POPULATION

Approx. 16.9 million.

CAPITAL

Santiago de Chile.

POLITICS & ECONOMY

Chile is a presidential republic. The country is one of the leading industry nations and one of the leading producers of raw materials within Latin America. Chile disposes of the biggest copper deposits of the world; moreover it extracts oil and gas. Chilean wines are well-known worldwide.

CURRENCY

Chilean Peso.

LANGUAGE

Spanish, also called Castellano.

CLIMATE & BEST TIME TO TRAVEL

Summer lasts from October to March, while winter from June to August. The country has quite different climatic zones in consequence of its length – from the desert regions in the North to the very cold zones in the South temperatures decrease steadily. In the center of the country and in Santiago it is rather temperate during the whole year, whereas you have long winters and cool summers in the South. The North is warm and dry.

TOUR: DISCOVERING CHILE

DAY 1	Santiago	Arrival Santiago de Chile. Half Day City tour to see the main attractions of this lively city.
DAY 2	Santiago	Half Day Wine tour (Indomita or similar & Casas del Bosque) with wine tastings and lunch.
DAY 3	Santiago / Calama / Atacama	Transfer to Santiago's airport. Arrival at Calama, transfer to San Pedro de Atacama. Half Day Moon Valley & Death Valley , to see strange salt and rock formations look like a moonscape.
DAY 4	Atacama	Half Day to Lagoons & Salt Lake. We will visit Toconao town, Chaxa Lagoon (the National Flamingo Reserve). Then, visit the Pukará de Quitor & the Ruins of Tulo . Return to the hotel.
DAY 5	Atacama	Half Day Tatio's Geysers tour , geothermal field at 4.320 m.a.s.l. Breakfast in the field. It is possible to take a bath at the natural geothermal pools (35°C). Return at noon time.
DAY 6	Atacama / Santiago	Transfer to Calama's airport. Arrival Santiago.
DAY 7	Santiago / Punta Arenas / Puerto Natales	Transfer to Santiago's airport. Welcome at Punta Arenas and transfer to Puerto Natales hotel.
DAY 8	Puerto Natales	Full Day Torres del Paine tour to enjoy its rough geography, lakes, flora and fauna.
DAY 9	Puerto Natales / Punta Arenas / Santiago	Transfer to Punta Arenas' airport to fly back to Santiago. End of our services.

ANTARCTICA: THE WHITE CONTINENT

Jumping over Cape Horn and the mythical waters of the Drake Passage, ANTARCTICA XXI takes you to one of the most spectacular places on earth, the coldest, highest, windiest, driest, and remotest continent - Antarctica.

Antarctica is an ecological wonder that bewitches explorers, scientists and voyagers alike. The Antarctic Continent keeps many hidden surprises for those who visit it. This fascinating territory contains more than 90% of the earth's land ice, which transforms it into the largest fresh water reserve on earth. Its matchless beauty contrasts with extreme climate conditions, all of which makes it an exotic destination, truly hypnotizing for those few that reach this far away corner of the universe. Among the main species that make up marine Antarctic fauna are Whales, Elephant Seals, Weddell Seals, Adelie, Chinstrap and Gentoo Penguins, in addition to the variety of birds, such as Albatrosses, Petrels and Snowy Sheathbills. In this enchanting adventure not only will you have the opportunity of coming into contact with highly unique animals, but will also enjoy the awesome scenery made of glaciers, mountains and roaming icebergs.



DAY ANTARCTICA CLASSIC AIR CRUISE 8 DAYS/7 NIGHTS

1	Punta Arenas	Arrive in Punta Arenas, Chile, welcome and transferred to your hotel. In the afternoon, you attend a mandatory briefing that provides important information about your voyage and reviews the essential guidelines for Antarctic visitors. Later, gather for a welcome dinner and meet your fellow adventurers while enjoying a typical regional menu.
2	Punta Arenas / Antarctica	Your Antarctic adventure begins with a two-hour flight from Punta Arenas to King George Island, in the South Shetland Islands. As you exit the airplane, the clear Antarctic air fills your lungs for the first time. Explore the area surrounding Chile's Frei Station and Russia's Bellingshausen station, before boarding a Zodiac to embark your expedition vessel.
3-6	Antarctica	Cruise between the South Shetland Islands and the western coast of the Antarctic Peninsula, sailing along ice-filled fjords and among spectacular icebergs, while enjoying the company of sea birds, penguins, seals and whales. Each day, disembark by Zodiac and explore the landscape together with expert polar guides. On board the ship, attend an engaging program of lectures and presentations, and enjoy spectacular views from the lounge while sharing your daily adventures with fellow guests. No journey is the same as flexibility is the key to success in Antarctica. The Expedition Team sets the voyage route to take advantage of the ever-changing opportunities provided by Nature, crafting a unique and extraordinary experience each time. Your voyage may include visits to sites such as Paulet Island, Hope Bay, Port Lockroy, Petermann Island, Paradise Bay, Deception Island, the Lemaire Channel, or many other magnificent places.
7	Antarctica / Punta Arenas	Scheduled return flight from Antarctica. Farewell to Antarctica before boarding the flight back to Punta Arenas. Upon arrival, transfer to your hotel for the night.
8	Punta Arenas	Breakfast, transfer to the Punta Arenas airport for your onward flight. End of our services.

OCEAN NOVA MAIN FEATURES



A modern and comfortable expedition vessel. Has capacity for 68 passengers accommodated in comfortable outside cabins. All cabins feature a picture window, a writing desk with chair, a wardrobe, individually controlled heating system, and a private bathroom. In addition to a glass-enclosed observation lounge and presentation room, Ocean Nova also has a spacious dining room, a bar, a library, a small gym, and an infirmary. The ship has a fleet of 7 Zodiac boats that are well suited for disembarking and wildlife watching.

HEBRIDEAN SKY MAIN FEATURES



With an ice-strengthened hull, it offers an exclusive and stylish base for adventurous exploration in Antarctica. Accommodate a maximum of 71 travellers on Air-Cruises. All Suites are spacious, with premium appointments throughout. Each Suite features a sitting area, a private bathroom, a picture window, and two twin beds that, on request, can be joined to form a queen-size bed. Public areas include "The Club" (panorama lounge), a Library, a Lounge with audio-visual facilities, a Dining room, a wraparound Sun Deck with Jacuzzi, an Exercise Room, a Medical Clinic and an elevator serving all passenger decks. The ship has a fleet of 10 Zodiac boats that are used for exploration in Antarctica.

CRUISES

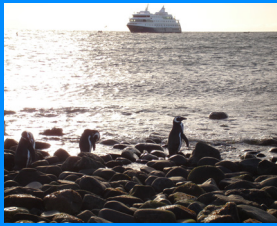
PATAGONIA AUSTRALIS CRUISES

Expedition cruise to the “uttermost end of the earth”. Sailing between Ushuaia (Argentina) and Punta Arenas (Chile) for discover the splendor and beauty of Patagonia’s wildlife and landscapes.



The cruise ship offers you a spacious cabin with plush bedding, storage options, and a lounge area. In addition to the room’s amenities passengers enjoy a view of the crisp ocean waters and the snow white mountainous skylines. Socialites will enjoy our comfortable Sky Lounge that makes for the perfect atmosphere to meet guests from all over the world while enjoying our decadent drink specials and meals. Experience all of the **Patagonian** region’s amazing beauty by cruising your way down to sites like **Cape Horn, Tierra del Fuego**, and more.

DISCOVER PATAGONIA USH-PUQ 4 DAYS/3 NIGHTS



DAY 1

Transfer to the port and board. Welcome cocktail. During the night we traverse the Beagle Channel and cross from Argentina into Chilean waters.



DAY 3

After nightfall we reenter the Beagle Channel and sail westward along the southern edge of Tierra del Fuego into a watery wonderland protected within the confines of Alberto de Agostini National Park. Our shore excursion this morning is Águila (“Eagle”) Glacier, which hovers above a placid glacial lagoon surrounded by primeval forest.

DAY 4

We anchor off Magdalena Island. Crowned by a distinctive lighthouse, the island is inhabited by an immense colony of Magellanic penguins. In September and April the penguins dwell elsewhere. After a short cruise south along the strait, disembarkation at Punta Arenas is around 11:30 AM. End of our services.

CRUCE ANDINO

BARILOCHE – PUERTO VARAS / PUERTO VARAS - BARILOCHE



Cruce Andino © is an invitation to tour the mythical Andean Lake district, through a natural route to connect Chile & Argentina. A route that over 400 years ago, the Huilliches Indians utilized as a trade route and then the Jesuit priests utilize to establish the religious missions in the Nahuel Huapi region. Navigation can be done on one full day tour or in two days with overnight at Peulla

AMAZON CRUISES



The Amazon Clipper Company gives guests the best way to enjoy the Amazon: on the water and integrated with the environment. They offer two types of fleet: Traditional (regional boats) and Premium (regional boats specially designed with more spacious cabins). The boats are comfortable with inviting public spaces, but small enough to dock at remote spots and cruise to hidden locations. Itinerary options:

2 night packages: Mondays to Wednesdays (**)
3 night packages: Wednesdays to Saturdays
5 night packages: Mondays to Saturdays

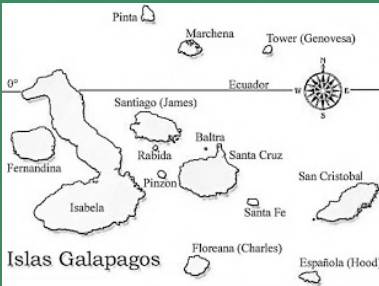
** AMAZON RIVER 3 DAYS / 2 NIGHTS

DAY 1	MONDAY	Meet at Hotel Tropical Manaus and board the Amazon Clipper towards the Amazon River. We'll meet to have a better understanding of the ecology of the Amazon. After dinner, we'll search for crocodiles and alligators, night-hawks, snakes, sloths and frogs.
DAY 2	TUESDAY	Canoe excursion along the waterways and lakes to see aquatic plants, birds and pink dolphins. Walk in the forest and visit the residents of the lake. Piranha fishing in the evening and see large flocks of birds. After dinner explore the forest in canoes to see nocturnal animals and admire the millions of stars.
DAY 3	WEDNESDAY	Birdwatching and the giant water lilies, in the January Ecological Park. We'll explore the mysterious flooded forest. While we have breakfast, the boat will begin its navigation towards the "Meeting of the Waters". Arrival 11:30 on the Pier of Tropical Hotel in Manaus. End of the services.



GALAPAGOS CRUISES

M/V GALAPAGOS LEGEND - CRUISE A



13 small islands and dozens of small islets make up The Galapagos Islands, just about 600 miles from the mainland of Ecuador, South America. These remarkable islands can be discovered in 3, 4 and 7 nights with:

- Galapagos Legend (100 pax capacity)
- M/Y Coral 1 (36 pax capacity)
- M/Y Coral 2 (20 pax capacity)

DAY 1	AM: flight Quito/Guayaquil to Baltra. Transfer to the pier. PM: a 45min bus ride will take us to the Santa Cruz highlands, natural reserve with giant tortoises. Then, walk inside surprising lava tubes and see Pit Craters, created from the collapse of surface materials into chamber fissures underground.
DAY 2	AM: walk on beach of black volcanic sand, visited by Darwin in 1835. PM: discover fascinating moonscape formed by different volcanic parasitic cones as we hike to the summit for great views of the islands.
DAY 3	AM: we walk by a brackish lagoon where feeding flamingoes can be found. The trail leads up to Dragon Hill, an important nesting ground for endemic land iguana. PM: visit North Seymour: two hour walk amidst large nesting colonies of blue-footed boobies, frigatebirds, and swallow-tailed gulls.
DAY 4	AM: north side of Santa Cruz; two small flamingo ponds with iguanas, coastal birds, Darwin finches, mockingbirds, and gulls, as well as interesting native and endemic vegetation. This beach is one of the main nesting sites of sea turtles in the Galapagos. Transfer to the airport for return flight to Guayaquil/Quito.



SOUTHAMERICAN TOURS



FULL SOUTHAMERICA TOUR

15 DAYS /14 NIGHTS



DAY 01 // RIO DE JANEIRO (-/-) Welcome to Rio, wonderful beach city, main tour attraction in Brazil. You will be escorted to your hotel. Free time.

DAY 02 // RIO DE JANEIRO (B/-) Today you will do a **half day city tour: Corcovado**. Get an overview of the city today as we tour Rio's best-known landmarks. Corcovado Christ statue on one of these mountain peaks offers the best way to become familiar with the city's geographic, as you have views of both zones from the mountain top.

DAY 03 // RIO DE JANEIRO - IGUASSU (B/-) Arrive and transfer to the hotel. During the afternoon, you will be picked up to do the **Brazilian falls Tour**. We will do a Half-day tour to admire the waterfalls from the Brazilian territory.

DAY 04 // IGUASSU – LIMA (B/-) Pick up to do a **full day Argentinean falls tour**. We will make a long walk along the lowest part of the waterfalls, to later visit the upper part of the footbridges. Return and transfer to the airport to fly to Lima. Welcome to Lima. Upon arrival you will be met at the airport and transferred to the hotel. Free time.

DAY 05 // LIMA (B/-) Today you will enjoy a **Panoramic city tour**. Your tour will start in downtown Lima, where you will make a scenic tour of the built-up area, a World Heritage listed by UNESCO. Then you will also visit Miraflores district.

DAY 06 // LIMA – CUSCO (B/-) Transfer to the Airport to board the flight to Cusco. Welcome to Cusco, Capital of the Inca Empire. Arrival and transfer to the hotel. Rest of the morning, free to acclimatize to the altitude. This afternoon we visit the **major sites of interest in Cusco**. You will start your tour with a visit to the Coricancha, also known as the "Temple of the Sun" (or "Premises of the Gilded One"). You will then go to the Cathedral. The Ecclesiastical Chapter ordered to extract and transport hundreds of stones from the Sacsayhuamán fortress for this purpose. You will then visit said fortress, an emblematic work of the Incas, which protected the Holy City. Conceived and built by Inca Pachacútec in the 15th century, The Sacsayhuamán complex was built with megalithic blocks, which transportation and construction continue to be a mystery. You will then go to Qenqo, located four kilometers away from Cusco City, an archaeological complex mainly used for religious purposes, and it is believed that agricultural rituals took place there. You will finally visit the vestiges of Puka Pukara, located seven kilometers away from Cusco. Return to Cusco city.

DAY 07 // CUSCO – SACRED VALLEY (URUBAMBA) (B/L/-) We leave Cusco to head east for a comprehensive exploration of the **Sacred Valley**. You will visit the Pisac, a town shaped as

a partridge, which is known for two reasons: the craft market established between colonial buildings, and for housing one of the most impressive complex of agricultural terraces of the valley. You will then have lunch at the agreed restaurant and will arrive in Ollantaytambo, a typical example of the urban planning of the Incas, whose residents still live in accordance with their old traditions. Transfer to your hotel in Sacred Valley.

DAY 08 // SACRED VALLEY - MACHU PICCHU – CUSCO

(B/-) Morning transfer to Ollanta train station. A half-hour train ride takes you through the Sacred Valley of the Incas up to Machu Picchu. On arrival a small coach takes you up the steep roads to the entrance of the citadel. **Machu Picchu** remained for centuries undiscovered by the Spaniards, only to be found in 1911 by Hiram Bingham. At the afternoon you will return to Poroy station, where you will be met and transferred to your hotel in Cusco.

DAY 09 // CUSCO – PUNO (B/L/-) **Your transfer to Puno will have stops:** Andahuaylillas, Sicuani, and then briefly at La Raya, the highest point of the route between Puno and Cusco, over 4,313 masl. Finally you will drive along the final course to the city of Puno.

DAY 10 // PUNO-LAKE TITICACA – PUNO (B/L/-) Upon your arrival at Puno's lake port, a vessel will take you to the **floating islands of the Uros**. Uros are an ancestral society that inhabits a series of artificial islands built with totora, a reed that grows in the lake. Then, you will continue your **trip to the Taquile Island**.

DAY 11 // PUNO – LIMA – BUENOS AIRES (B/-) Transfer to the airport to take the flight to Buenos Aires. Transfer to your hotel and rest of the day free at leisure.

DAY 12 // BUENOS AIRES - EL CALAFATE (B/-) At a time to be confirmed, we will go to the local, to take a fly to Calafate. Arrive and transfer to hotel.

DAY 13 // EL CALAFATE (B/-) Full day tour to the National Park Los Glaciares, visiting the **Perito Moreno Glacier**. This natural monument of extraordinary beauty has been declared by UNESCO as Humanity Patrimony.

DAY 14 // EL CALAFATE - BUENOS AIRES (B/-) We will go to the local airport, to take a fly to Buenos Aires City. On arrival, transfer to hotel.

DAY 15 // BUENOS AIRES - END OF THE TRIP (B/-) Today you will enjoy a **HD City tour in Buenos Aires**. You will discover the magic of Buenos Aires in a city tour in which you will visit the most important districts. Afternoon, transfer to the Ezeiza international airport. End of the trip.



LOI SUITES
IGUAZU HOTEL





BUENOS AIRES, IGUAZU & RIO DE JANEIRO TOUR

7 DAYS / 6 NIGHTS

DAY 01 // ARRIVAL RIO DE JANEIRO (-)

Welcome to Rio, wonderful beach city, main tour attraction in Brazil.

DAY 02 // RIO DE JANEIRO (B)

Today you will do a **half day city tour: Corcovado**.

Get an overview of the city today as we tour Rio's best-known landmarks. Corcovado Christ statue on one of these mountain peaks offers the best way to become familiar with the city's geographic, as you have views of both zones from the mountain top.

DAY 03 // RIO DE JANEIRO - IGUAZU (B)

Transfer to the airport to fly to the Iguassu Falls. We will do a Half-day tour to admire the **waterfalls from the Brazilian territory**. End of the tour transfer back hotel.



DAY 04 // IGUAZU (B)

Pick up to do a full day **Argentinean falls tour**. We will make the tour to the waterfalls, covering them from the Argentine side. After entering the National Park Iguazú, we will make a long walk along the lowest part of the waterfalls, to later visit the upper part of the footbridges.

DAY 05 // IGUAZU - BUENOS AIRES (B)

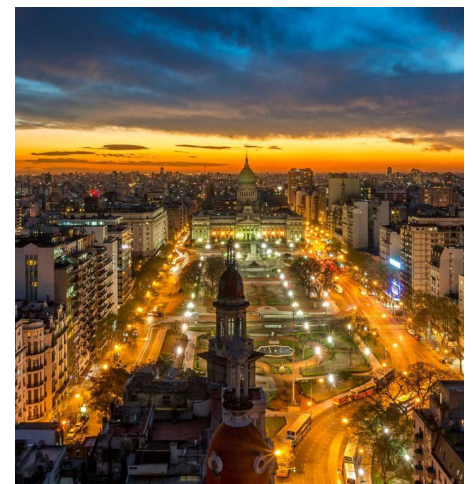
Transfer to the airport to fly to Buenos Aires. Welcome to Buenos Aires, beautiful city, capital of Argentina. You will be escort to your hotel.

DAY 06 // BUENOS AIRES (B)

During this day, we will make a **half day city tour over the Buenos Aires city**, showing its different districts, communities and architectural styles.

DAY 07 // BUENOS AIRES / OUT (B)

Transfer to the airport to take your flight back home. End of our services.



POSSIBLE EXTENSIONS



From the city of Buenos Aires, several ships on a daily basis leave the city towards the Oriental Republic of Uruguay. Take just 50 minutes to reach the well-known city of Colonia del Sacramento, meeting point of Spanish and Portuguese colonization, while the ship to Montevideo city takes 3hrs along the De la Plata River to reach the Uruguayan capital city.

URUGUAY

DAY 1	Buenos Aires / Colonia de Sacramento	Transfer to the port of Buenos Aires to take the ferry to Colonia (Uruguay), old colonial city from the seventeenth century located over the oriental bank of the De la Plata River. Welcome at Colonia and Half Day Walking City tour . The old historical part of Colonia city was declared by UNESCO as World Heritage of Humanity in 1995, since it is a successful mixture of post-colonial Portuguese and Spanish styles.
DAY 2	Colonia de Sacramento / Montevideo	Transfer by bus to Montevideo, capital city of Uruguay. Arrival and Half Day City Tour over Montevideo . It has an ideal bay, which constitutes a natural port, the most important of the country.
DAY 3	Montevideo	Transfer to the airport of Montevideo. End of our services.



From the city of Buenos Aires or Rio de Janeiro there are direct flights to Santiago de Chile, lively capital city of Chile



CHILE

DAY 1	Buenos Aires / Santiago	Transfer to the airport of Buenos Aires to take the flight to Santiago (Chile), energetic and sophisticated. Welcome and Half Day Santiago City tour , visiting the main attractions of Santiago de Chile: Bernardo O´Higgins Avenue (also called "Alameda"), the Providencia District, the Cerro San Cristóbal, Metropolitan Park, Forestal Park, the Bellas Artes Museum, Armas Square with its cathedral, Town Hall of Santiago.
DAY 2	Santiago	Day at leisure. We suggest to include a FD Tour to Valparaíso or a Wine Tour.
DAY 3	Santiago	Transfer to the airport of Santiago. End of our services.





SUMMIT TRAVEL is a company formed by a team of young and daring executives, with more than fifteen years of experience in the tourism industry both in the country and overseas. We have a highly trained staff having technical and working skills. We are fully aware that the quality of service we provide is our most competitive tool, and because of that we train ourselves every day to offer you different alternatives for holidays or business trip as well as to prepare any other business meeting, both in the country and overseas. We offer you to carry out direct operations with each one of the main national and international suppliers, as well as every air company on the market. We invite you to know more about our company and products.

MISSION:

Our ultimate mission is to meet our customer's needs in the best and most efficient way, having the following as our main goals:

- To provide a customized service
- To offer international quality standards
- To ensure simplicity in our operations
- To provide confidence and reliability
- To offer a comprehensive service

WHY SUMMIT TRAVEL?

TO BE SERVICED BY A LOCAL COMPANY, WITH PERSONAL ATTENTION.

We are local hosts in South America, and for that reason we know and recommend places and accommodations where we have actually been. We maintain an artisanal and simple spirit, formed by a professional and committed human team.

OUR PASSENGERS RECOMMEND US AND KEEP COMING BACK.

We seek a relation with our passengers that will last a long time; our goal is not that you choose us today but that you choose us always.

SECURITY AND PERMANENT 24 HOURS ASSISTANCE

Our services are guaranteed by the Ministry of Tourism of Argentina, and our license number is 13550. Our desire is for our passengers to feel not just safe, but also "at home"; our greatest wish is that they live a unique experience and they always feel aided and supported in what they may need. Our "teamwork" is what makes this happen, by being there when needed, with a 24 hour telephone assistance, in case of any contingency.

